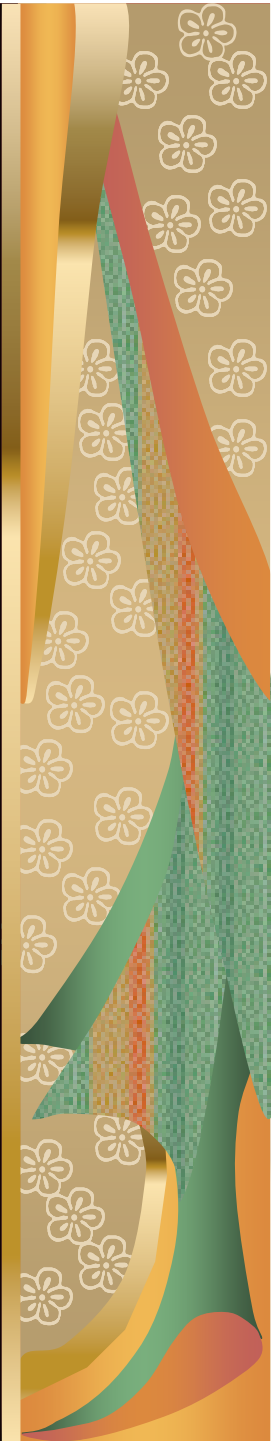


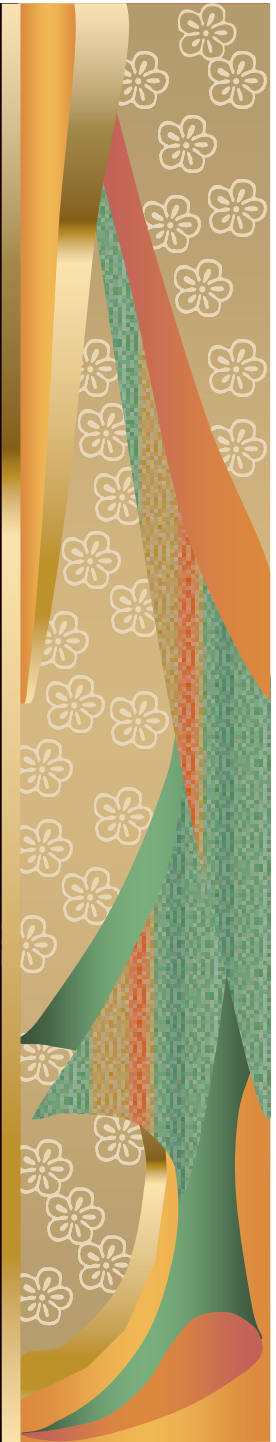
ARTS EDUCATION AND MUSEUMS

CLIVE GRAY
De Montfort University
cjg@dmu.ac.uk



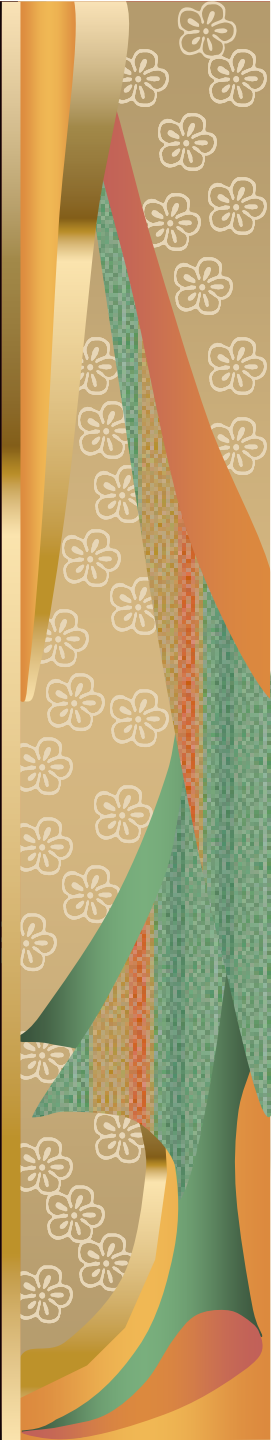
INTERNAL PRESSURES

- Money – ‘so little time, so much to do’
- Rationing – squaring the circle
- What are museums for? –
- Curatorship
- Education
- Entertainment
- Managing resources



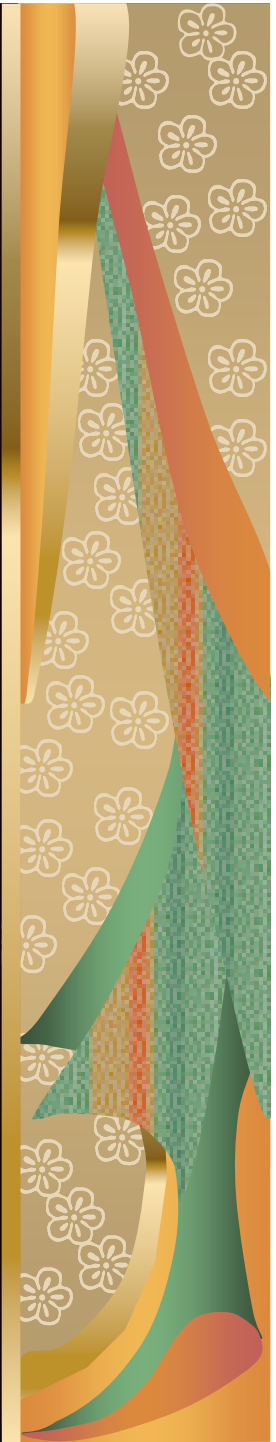
INTERNAL PRESSURES

 Managing the external world



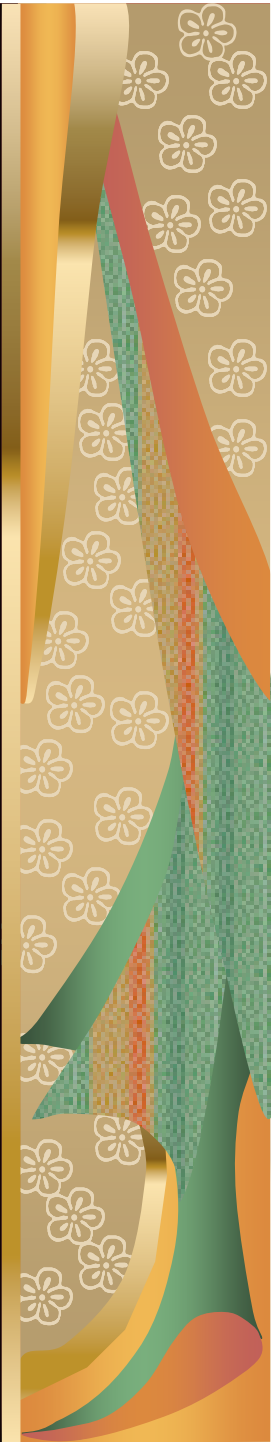
EXTERNAL PRESSURES

- Central Government
- Local Government
- Museums, Libraries and Archives Council
- Audit Commission
- Museums Association



EXTERNAL PRESSURES

- International Treaties and Obligations
- World Heritage Convention
- UNESCO Convention on Intangible Cultural Heritage
- Washington Conference Principles



MANAGING PRESSURE

- Attachment – to political, economic and social resources otherwise not available
- Instrumentalisation – changing the focus of activity



THE FUTURE

- Museums as educators?
- Museums as leaders?
- Museums as resources?
- Museums: proactive or reactive?

